

Fibre Optic Break-Out Terminal



Sliding FOBOT OPX-FOBOT-XX

Suitable for the protective connection of loose tube optical cables or tight buffer bundled pigtailed and jumpers, branch optical cables and jumpers, steel tube type PLC splitters and jumpers. Available in 1U, 2U, 3U, and 4U which are suitable for up to 192-core distribution respectively. available upon request.

Chassis with 19 or 21 inch mounting ears, installed in a cabinet or rack.

- 1) It is made of high-quality cold roll steel & the surface is sprayed with electrostatic powder.
- 2) The front door has a hinge, a flip-type structure with elastic door buckle locking method.
- 3) Metal pull-out tray with slide rail, stainless steel limit buckle on the side and limit belt on the back to ensure high reliability.
- 4) The fiber splice tray is made of high-quality plastic, including the fiber splicing module, fiber arrangement module, and adapter panel, which can be disassembled and interchanged.
- 5) The splice tray is installed on a stepped bracket, which can be superimposed according to the number of U. There are supporting members on the side of the tray, which can be flipped, and the splice is convenient.
- 6) There are horn-shaped fiber outlet ears on both sides of the box, which can well protect fiber cables and pigtailed.
- 7) Pull-out chassis is suitable for standard 19 or 21 inch cabinet or rack installation;.

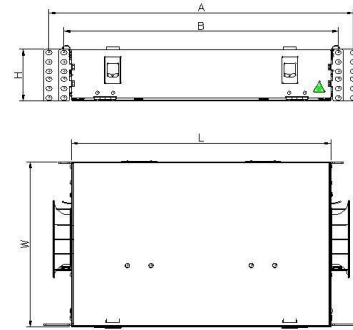
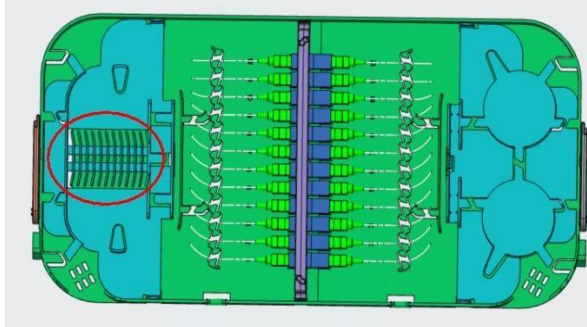
Model	L	W	H	A	B	Splice Tray Q'ty	Adapter Q'ty
OPX-FOBOT-24	440	277	1U	515.8	465	2	24 SC SX/ 48LC
OPX-FOBOT-48	440	277	2U	515.8	465	4	48 SC SX/ 96LC
OPX-FOBOT-96	440	277	3U	515.8	465	6	72 SC SX/144LC

1. Product configuration & Dimensions:

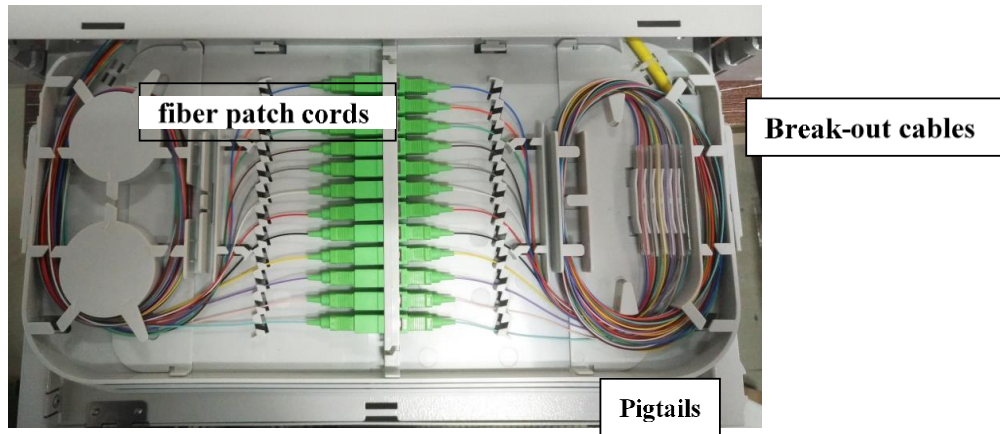
1.1 Product configuration (Can be customized according to the customer):

• Metal pull tray with slide rail	• Metal front cover with hinges
• Plastic splice tray mounting bracket	• Plastic splice tray
• Fiber arrangement module	• Fiber splicing module
• Adapter Panel with 12 SC Simplex Ports (24 LCDX)	• Adapter Panel with 12 SC Simplex/ 12 LC Duplex Ports
• Plastic support	• Plastic support
• Stainless steel limit buckle	• Limit belt
• Plastic elastic door buckle	• Metal hinge
• Velcro tie	• 19/21 inch mounting ears

OPX-FOBOM-24



1.1 Break-out cables in & fiber patch cords out



Each Fibre Optic Breakout Module(FOBOM) be Modification with 12 splice slots, each slots can splice 2pcs Sleeves . The max capacity of each trays is 24Fo . (Above Picture)